



**Borrego Springs Watermaster  
5-Year GMP Assessment and Update  
Public Information Session**

April 30, 2026

***“few, if any, other critically overdrafted basins subject to SGMA have achieved equivalent levels of implementing the following measures:  
(1) metering and reporting of over 95 percent of groundwater extractions; (2) well-defined and enforceable pumping allocations and extraction fees; and (3) actual, substantial reductions in extractions.”***

*~ Department of Water Resources, Staff Assessment Report, February 25, 2025*

# Information Session Objectives

- Two documents released for **public review** on April 24<sup>th</sup>:
  - *Five-Year Assessment of the Groundwater Management Plan for the Borrego Springs Subbasin (5-Year Assessment Report)*
  - *2026 Update of the Groundwater Management Plan (2026 GMP Update)*
- Session Objectives:
  - Notify the public of the intent to amend Judgment
  - Provide overview of 5-year GMP assessment process
  - Summarize key findings
  - Describe updates to the GMP
  - Communicate public review timeline and next steps
  - Answer public questions

# Background

- **SGMA:** The Sustainable Groundwater Management Act of 2014 requires local stakeholders in a groundwater basin to implement a Groundwater Sustainability Plan (GSP) to achieve groundwater sustainability by 2040 and thereafter
- **June 25, 2021:** The Borrego Springs Watermaster submitted to the California Department of Water Resources (DWR) its Judgment and Groundwater Management Plan (GMP) as an alternative to a GSP for the Borrego Springs Subbasin (Basin)
- **February 25, 2025:** DWR approved the Judgment/GMP as an Alternative Plan but also listed several Recommended Corrective Actions (**RCAs**) that should be implemented by the Watermaster to maintain the approval status of the Judgment/GMP as an Alternative

# Regulatory Requirements

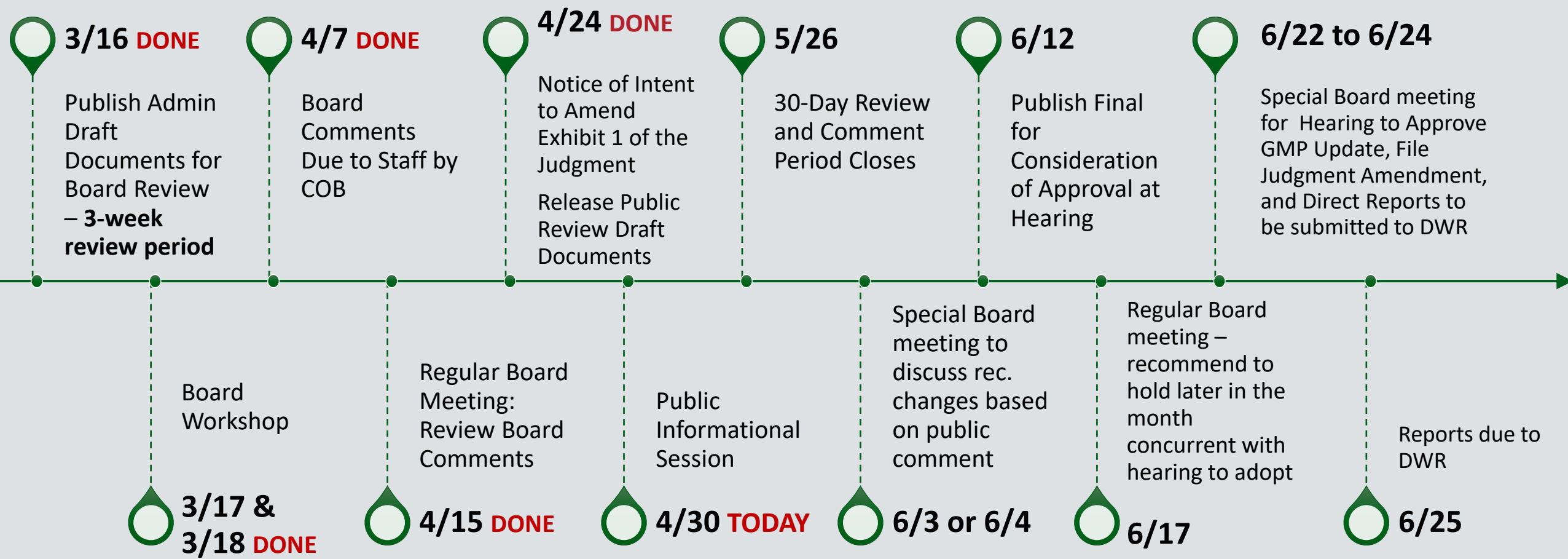
- CWC §10733.6(c); 23 CCR §358.2(b) requires that Alternative Plans be resubmitted to DWR every 5 years
- 23 CCR §356.4 requires the Alternative Plans resubmission must be accompanied by a **periodic evaluation** (5-Year Assessment Report), including Alternative Plan Elements Guides (Tables ES-1 and ES-2)
- DWR has established a due date of **June 25, 2026** for the resubmission of the Alternative Plan
- Because the GMP is an exhibit to the Judgment, an update of the GMP requires **amendment to the Judgment to replace Exhibit 1**
  - Amendment to the Judgment requires notification to Judgment Parties of intent to amend (review and comment period is now open)

# These Reports have been 1-Year+ in the making...

*Public feedback opportunities have been offered during Open Houses, TAC meetings, & Board meetings*

Meeting Date	Topic
March 19, 2025	Progress Toward Completion of 5-Year GMP Assessment Report
April 16, 2025	Approach to Addressing DWR Comments on Judgment/GMP
June 18, 2025	Considerations for Updating the GMP as part of the 5-Year Assessment
July 16, 2025	RCA No. 7 – Relationship of the Judgment and GMP
August 20, 2025	Sustainable Management Criteria – Water Levels and Storage
September 17, 2025	Sustainable Management Criteria – Degraded Water Quality
October 15, 2025:	Open House on updates to SMC for groundwater levels, storage, and quality → <b>Targeted Public Information Session to Obtain Feedback</b>
November 19, 2025:	RCA No. 6 – Land Subsidence
December 17, 2025	RCA No. 2 – Domestic Well Mitigation
January 21, 2026	Status of Projects and Management Actions (PMAs)
February 18, 2026	Assessment of Basin Conditions to Demonstrate Progress Towards Sustainability
March 17-18, 2026	Board GMP Workshop to review and edit draft documents

# Schedule to Complete Assessment Report and 2026 GMP Update



# What happens next?

- Publication of the public draft reports on April 24<sup>th</sup> kicked off the public review period → now open through May 26<sup>th</sup>
- Email comments to [borregospringswm@westyost.com](mailto:borregospringswm@westyost.com) **by 5pm on May 26, 2026**
  - Feedback received today will be summarized and presented to the Board at its May meeting
- Board will hold Special meeting to discuss changes based on public comment prior to finalizing reports
- Your input is part of this process!

**NOTE: Feedback must be submitted in writing to be considered for inclusion in Draft Final Reports. If you need assistance providing feedback, please contact us.**

# Documents Available for Review

- Two documents released for **public review** on April 24<sup>th</sup>:
  - *Five-Year Assessment of the Groundwater Management Plan for the Borrego Springs Subbasin (5-Year Assessment Report)*
  - *2026 Update of the Groundwater Management Plan (2026 GMP Update)*

# Key Findings

## Implementation & Management Progress

- Active and stable governance
- Pumping reductions exceed Judgment Rampdown requirements
- Comprehensive metering program implemented
- Water rights accounting and tracking system established
- Leasing and transfer mechanisms actively used
- Monitoring network expanded and improved
- Ongoing stakeholder engagement
- No enforcement actions

# Key Findings

## Basin Conditions & Progress Toward Sustainability

- Expanded understanding of basin-wide conditions
- Groundwater level declines slowing in most areas, even stabilizing in some areas
- Rate of reduction in groundwater storage decreasing
- Groundwater quality generally stable for key constituents
- Projected to achieve sustainability by 2040 based on plans of the Parties\*

*\*subject to planning uncertainty*

# Assessment Requirements

- Periodic Evaluation (Assessment Report) – Required Elements:
  - Assessment of progress toward sustainability goal
  - Status of projects & management actions
  - Assessment of basin conditions vs. management criteria
  - Updated monitoring network evaluation
  - Description of new data and updated basin understanding
  - Recommended plan amendments & corrective actions

# 5-Year Assessment Report

Executive Summary

Ch 1 – Regulatory Background and Assessment Objectives

Ch 2 – Administration, Coordination, and Engagement

Ch 3 – Recommended Corrective Actions

Ch 4 – Management Action Implementation Status

Ch 5 – New Information

Ch 6 – Basin Setting Based on New Information

Ch 7 – Groundwater Monitoring Network

Ch 8 – Assessment of Progress Toward Sustainability

# 5-Year Assessment Report

## Chapter Introductions

- Page 1 of every Chapter
- Green Callout Box
  - Identifies SGMA requirements and DWR guidelines relevant to the Chapter
  - Description of the Chapter
- Purple Callout Box
  - Overview of changes to the GMP that resulted in from the information documented in the Chapter

### CHAPTER 6

#### Basin Setting Based on New Information

##### *DWR Requirement(s):*

*Title 23 § 356.4(d): An evaluation of the basin setting in light of significant new information or changes in water use, and an explanation of any significant changes. If the Agency's evaluation shows that the basin is experiencing overdraft conditions, the Agency shall include an assessment of measures to mitigate that overdraft.*

##### *Description of Chapter:*

This chapter provides an overview of the Basin Setting in the GMP, identifies the elements of the Basin Setting that have changed based on new information reported in Chapter 5, and describes the revised elements of the Basin Setting based on the new information. For each element described how the GMP was updated to reflect the updated characterization is described.

#### CHANGES TO THE GMP BASED ON INFORMATION PRESENTED IN CHAPTER 6

- GMP Section 2.2.1.3 – Principal Aquifers and Aquitards
  - Added Table 2.2-3b Aquifer Hydraulic Conductivity and Storage Properties – 2022 BVHM
  - Updated text to describe differences in 2022 BVHM aquifer properties and the previously reported estimates from USGS.
- GMP Section 2.2.1 - Hydrogeologic Conceptual Model
  - Updated Figure 2.2-1 Hydrogeologic Conceptual Model of the Plan Area to reflect revised average inflows and outflows for the 2002 to 2015 period
  - Updated text to reflect revised average inflows and outflows for the 2002 to 2015 period
- GMP Section 2.2.3 – Water Budget
  - Created new subsections to include a summary of the updated Basin water budget based on the 2022 BVHM (Section 2.2.3.1) and preserve the full discussion of the water budget components and its development based on understanding as of WY 2020 (Section 2.2.3.1)
  - Added Tables 2.2-A through 2.2-F in Section 2.2.3.1 to summarize the water budget based on the 2022 BVHM and compare the updates to the 2016 BVHM.
  - Added Figure 2.2-A. in Section 2.2.3.1 to illustrate the revised water budget and change in storage based on the 2022 BVHM.

# Approach to GMP Updates

---

The GMP is meant to be an ***adaptive management plan*** that is updated periodically based on new information

---

The ***intent of the updates is not to re-describe or update every aspect*** of the Basin setting, physical conditions, technical information, costs of implementation, etc. that have changed since its initial publication

---

The ***intent is to add new information*** that is ***critical to understanding how Watermaster will implement management actions*** in accordance with the Judgment and assess progress toward sustainability

---

New information builds on the original text of the GMP without eliminating it (e.g. revised SMC) and **all new text is directly from the 5-Year Assessment Report**

---

The original GMP ***text was only replaced where it was necessary*** to provide clarity as to management intent

---

All changes (additions and strikeouts) are provided as redline text (a DWR requirement)

# 2026 GMP Update - Chapter Introductions

- New introductory text to each of the GMP chapters describing the GMP updates
- New introductions include a table that summarizes the changes made to the Chapter, including the Section No., a description of the change, and the date of published change
- Format facilitates future updates
- All changes shown in “REDLINE”

## Chapter 3 Introduction Table of Updates

The table below summarizes the changes to Chapter 3 since its initial publication in 2020. As previously noted, all changes to this GMP are shown in redline.

Chapter Section	Page No.	Revision Details	Date of Published Change
Introductory Text	3-1	Chapter introductory text was added to provide the reader context about updates made to Chapter 2 since the first publishing of the GMP in 2020. Includes this table that summarizes the revisions to the Chapter and the date of the published change.	June 2026
3.0	3-2	The introduction to the SMC was redlined to describe how the section was divided into two parts – one to document the new SMC as of 2025 and one to retain the original 2020 SMC, including all the relevant discussions of how the relevant sustainability indicators were determined.	June 2026
3.1	3-3	Section 3.3 is <u>all</u> new text and represents the updated SMC that will apply for the WY 2026 through 2030 implementation period. All components of the SMC are described for each sustainability indicator: sustainability goal, definition of undesirable result, minimum thresholds, interim milestones, measurable objectives, methods to assess progress towards sustainability. The section concludes with the description of the updated groundwater monitoring network.	June 2026
3.1.1		Added <b>Figure 3.1-A: Methods to Estimate Groundwater-Elevation Use Thresholds for Various Well Types</b>	June 2026

# 5-Year Assessment Report → GMP Updates

## Ch 3 – Recommended Corrective Actions

- GMP Executive Summary
- GMP Chapter 2 – Plan Area and Basin Setting
- GMP Chapter 3 – Sustainable Management Criteria

## Ch 4 – Management Action Implementation Status

- GMP Executive Summary
- GMP Chapter 4 – Projects and Management Actions

## Ch 6 – Basin Setting Based on New Information

- GMP Executive Summary
- GMP Chapter 2 – Plan Area and Basin Setting


## Ch 7 – Groundwater Monitoring Network



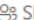

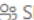
- GMP Chapter 3 – Sustainable Management Criteria

***\*No changes to Chapter 1 – Introduction, Chapter 5 – Implementation Plan, or Appendices***




# Recommendations for Review

- **First** read the 5-Year Assessment Report
- **Then** read the 2026 Update to the GMP
- OneDrive link:
  - One directory per report
  - One PDF for report and one PDF for appendices
- Reminders:
  - Text, table and figure edits in the GMP are taken from the 5-Year Assessment Report (verbatim in most cases)
  - **All edits to the 2020 version of the GMP are shown in redline text**

My files > GMP Assessment Report & Update > Public Draft (April 2026) 

 Name ↑ ↓	Modified ↓	Modified By ↓	File size ↓	Sharing ↓
 2026 Update to the GMP	4 days ago	Lauren Salberg	2 items	 Shared
 5-Year Assessment Report	4 days ago	Lauren Salberg	2 items	 Shared

My files > GMP Assessment Report & Update > Public Draft (April 2026) > 5-Year Assessment Report

 Name ↑ ↓	Modified ↓
 Borrego Springs Subbasin 5-Year Assessment - Public Draft - 260424.pdf	4 days ago
 z_Appendices Borrego Springs Subbasin 5-Year Assessment - Public Draft - 260424.pdf	4 days ago

# *5-Year Assessment Report*

## Executive Summary

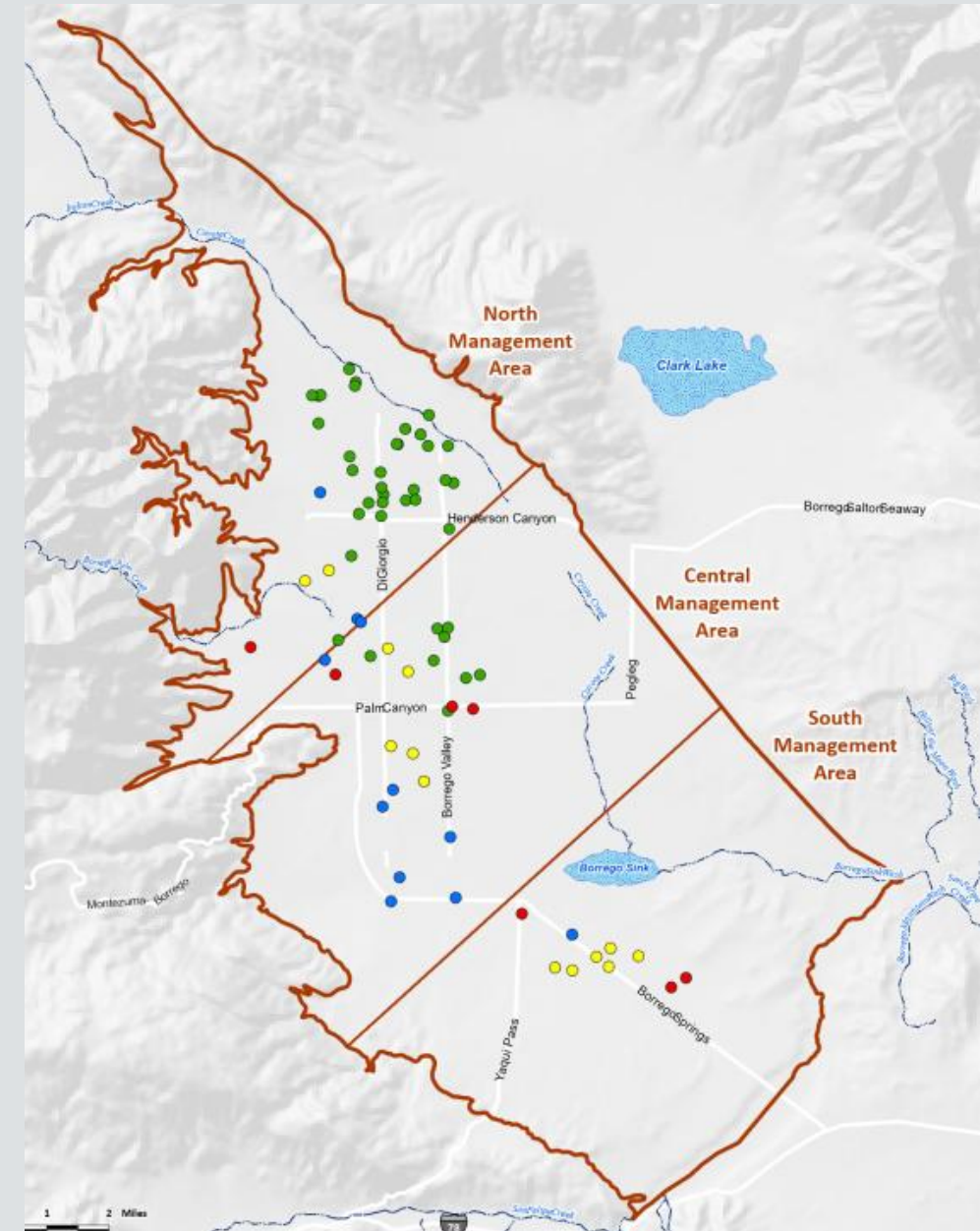
- Assessment Report Overview
  - *REPORTING PERIOD: Start of Judgement Implementation (2020) through the end of Water Year (WY) 2025 (September 30, 2025)*
- Summary of report chapters and key findings in each
- Summary of changes to the GMP resulting from the 5-Year Assessment
- Tables to demonstrate compliance with required elements of evaluation and Alternative Plans

# Assessment Report

## Chapter 1: Background and Objectives

### Chapter Contents

- Background on the Borrego Springs Judgment and GMP
- Physical Solution For Basin Management
  - Stipulated Judgment
  - Groundwater Management Plan
- Objective of the Five-Year GMP Assessment and Report Organization



# *Assessment Report Chapter 2: Administration, Coordination, Engagement*

## **Chapter Contents**

- Basin Administration and Coordination
  - Watermaster Powers and Responsibilities
  - Coordination with Local Agencies
  - Enforcement and Legal Actions
- Engagement and Outreach
  - Distribution lists, website, Board meetings
  - TAC, EWG
  - Stakeholder outreach events
  - Outreach and engagement successes over the reporting period

*“The Basin is managed under a transparent, technically informed, and robust governance structure that has contributed to progress towards achieving sustainability.”*

# *Assessment Report Chapter 3: Recommended Corrective Actions (RCAs)*

## **Chapter Contents**

- Provides an overview of the seven RCAs provided by DWR
- Summarizes DWR feedback that relates to the RCA
- Presents Watermaster's plan to address each RCA
- Summarizes changes made to the GMP as a result of addressing the RCA

*RCAs are improvements identified by the California Department of Water Resources during its review of a groundwater management plan.*

*They highlight where the plan can be **strengthened** or **clarified** to better meet SGMA requirements and demonstrate long-term sustainability.*

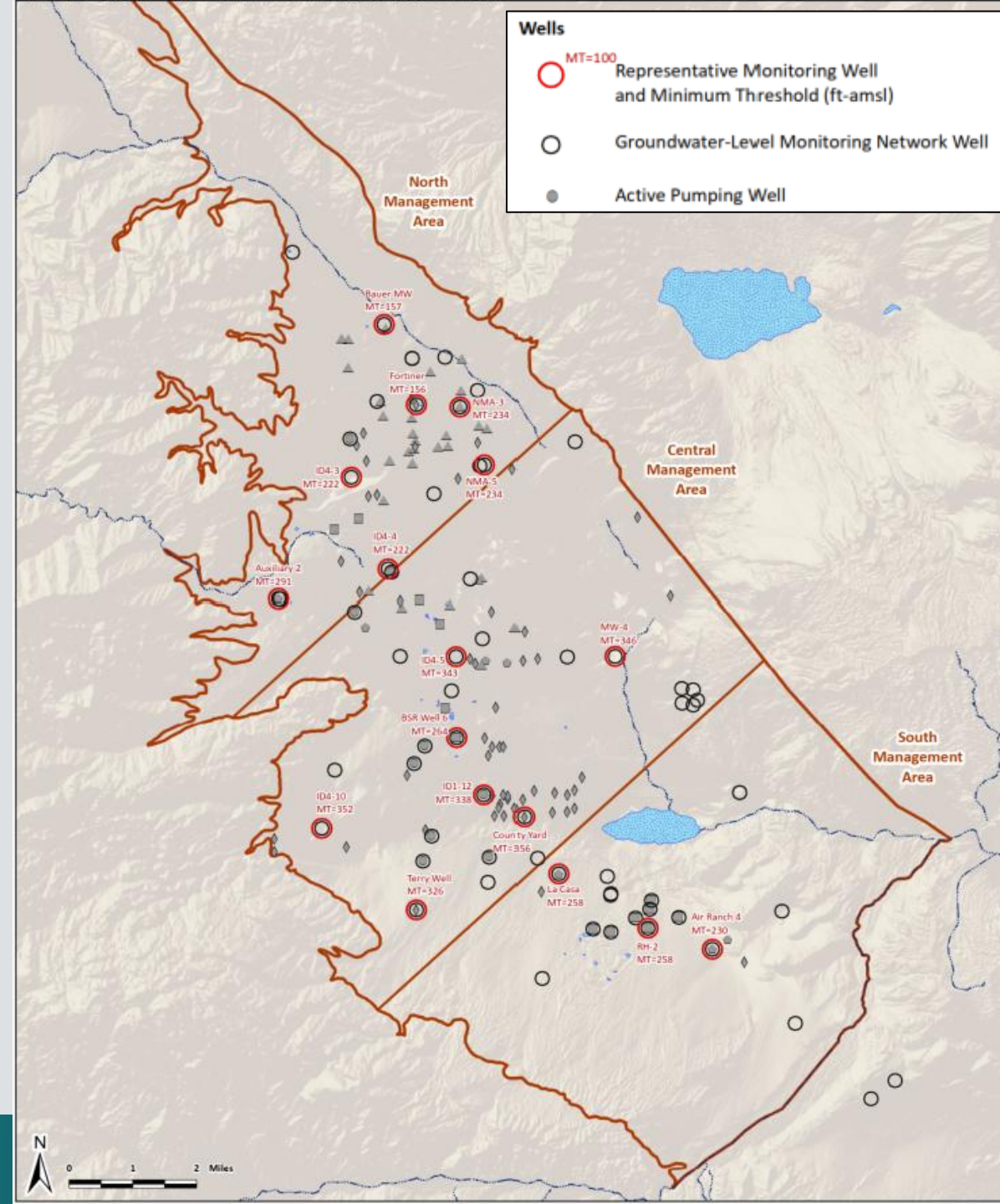
# Assessment Report Chapter 3: Recommended Corrective Actions

**Changes to GMP:**

RCA No. 1	Management Areas		Added clarifying language to Chapter 2.2.4 of GMP
RCA No. 2	Domestic Well Mitigation		No Changes
RCA No. 3	SMC for Chronic Lowering of GW Levels		<p><b>NEW</b> Subsection 3.1 on updated SMC that apply for WY 2026 forward</p> <p><i>Preserves the SMC as published in 2020</i></p>
RCA No. 4	SMC for Reduction in GW Storage		
RCA No. 5	SMC for Degraded GW Quality		
RCA No. 6	Land Subsidence		<b>NEW</b> Subsection 3.1.4 to describe approach for analyzing subsidence
RCA No. 7	Relationship of the Judgment and GMP		No Changes

# Improvements to SMCs for Groundwater Levels

- Used new data and information to inform changes to SMC:
  - New monitoring data (pumping, water levels, well construction)
  - Updated and recalibrated BVHM
  - Pumping projections
- New method that protects the most sensitive beneficial users (primarily domestic wells), developed via:
  - TAC process
  - Conversations with Pumpers
  - Stakeholder input from October 2025 Open House
- Increased number of Representative Monitoring Wells with help of expanded Basin-wide monitoring **with help of the public!**

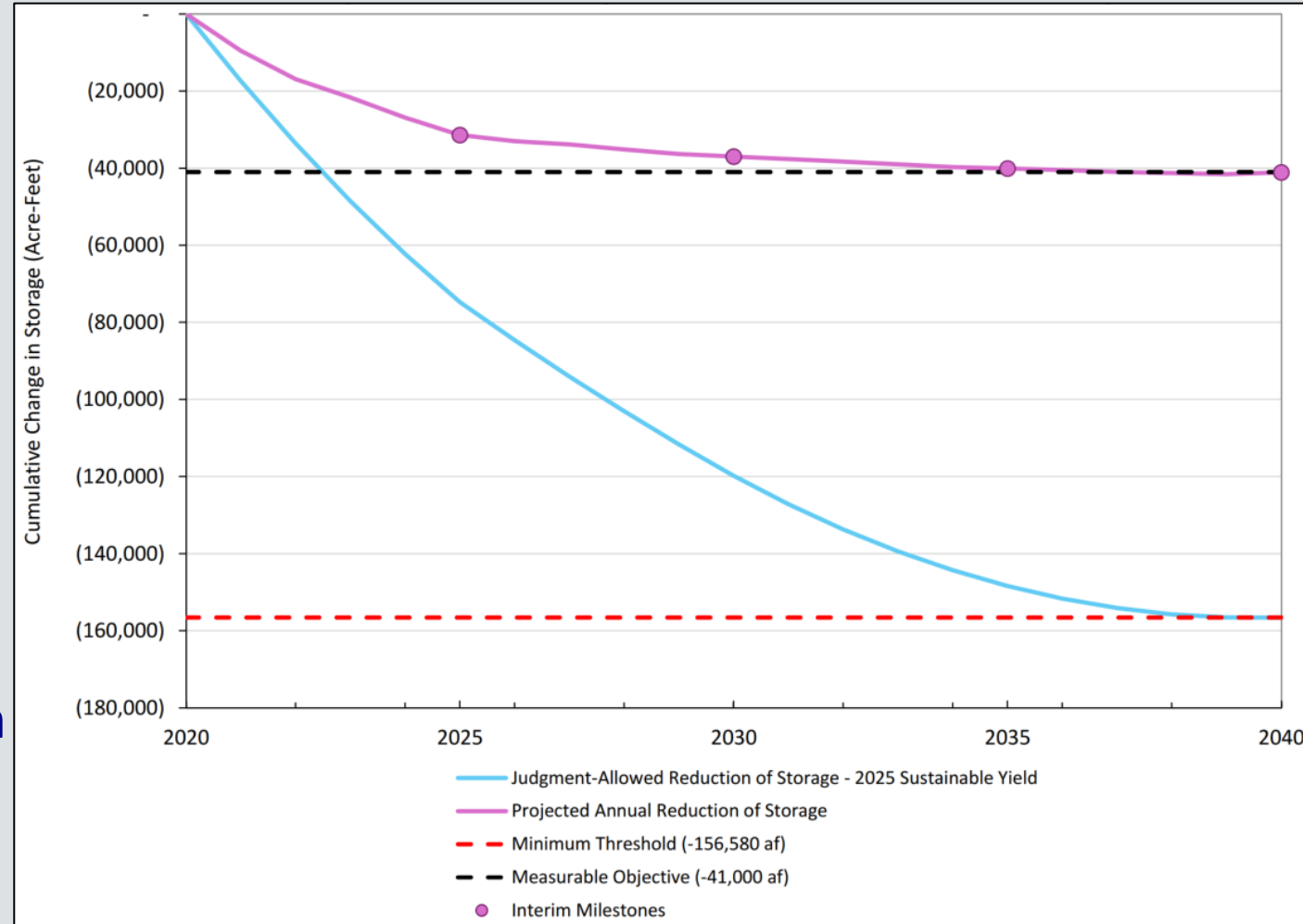


# Improvements to SMC for Groundwater Storage

Updated to align with Judgment

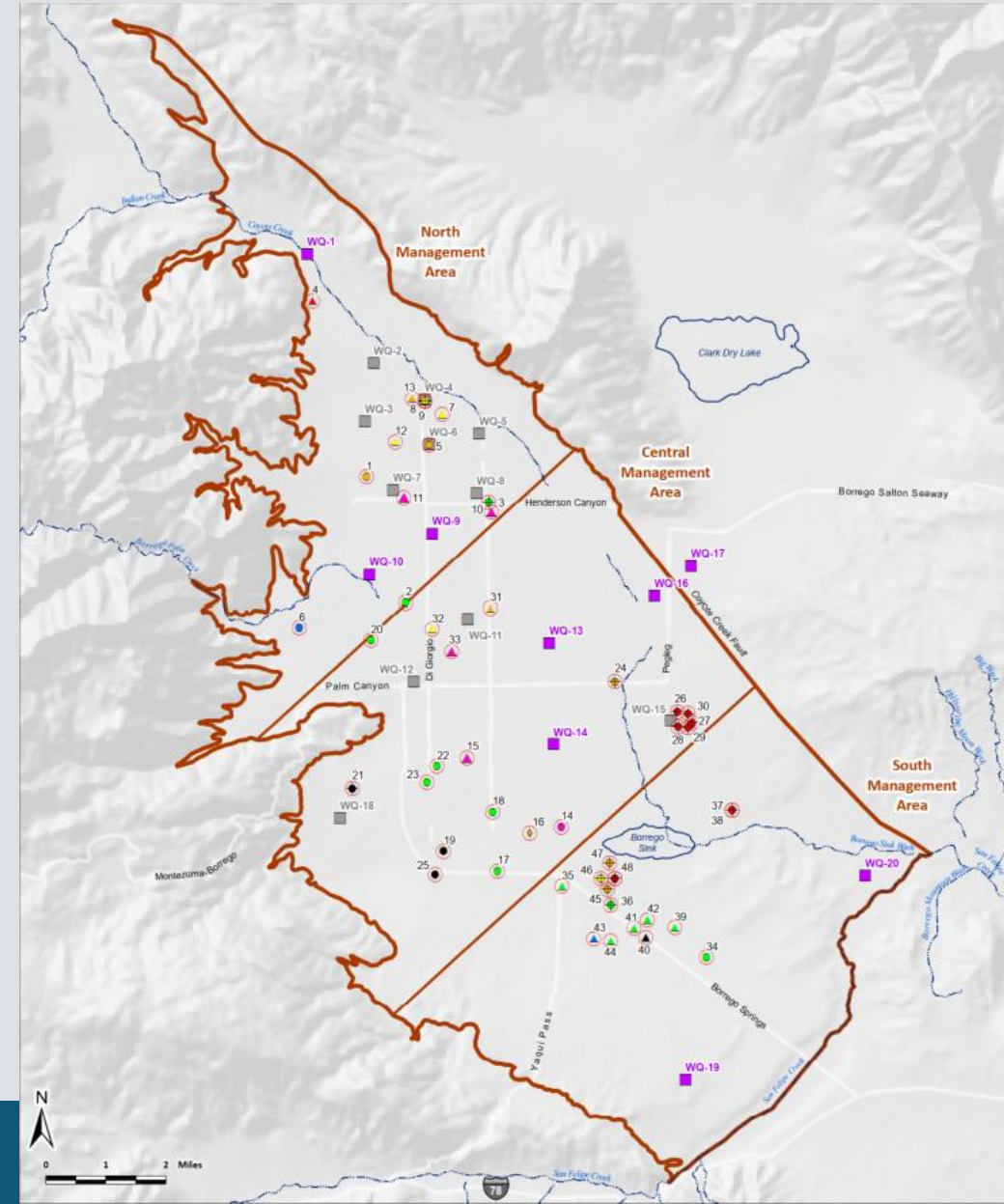
Minimum Threshold → Judgment allowed reductions in storage under the Rampdown to the 2025 Sustainable Yield

Measurable Objectives & Interim Milestones → Expected reductions in storage based on pumping projections of the Parties



# Improvements to SMC for Groundwater Quality

- Improved description on how Watermaster will characterize and analyze water quality conditions annually
- Increased number of Representative Monitoring Wells thanks to expanded Basin-wide coverage **with help of the public!**
- Eliminated fluoride as a COC based on trend analysis – saves on cost



# *Assessment Report Chapter 4: Management Action Implementation Status*

## **Chapter Contents**

- Clarifies the linkage between the PMAs in the GMP and Judgment requirements
- Presents status of implementation of each management action
- Describes the benefits of implementation on groundwater conditions
- Describes anticipated activities over the next five years

## **Changes to the GMP?**

- Section 4 of the GMP – PMAs
- **NEW** Section 4 introductory text and table
  - Identifies the linkage between the Judgment and each PMA, as described in this chapter for each PMA
  - Text and table derived from Chapter 4 of the 5-year Assessment Report

# PMA Implementation Status Highlights

## PMA No. 3- Pumping Reduction Program

- Metering program developed and implemented
- Achieved 99% compliance with reporting
- Analyze data annually and perform accounting
- 29% decrease in annual pumping since WY 2021
- Ahead of Rampdown schedule

## PMA No. 2 – Water Conservation Program

- **Agriculture:**
  - Soil moisture sensors
  - Efficient Irrigation
- **Recreation:**
  - Turf removal
  - Optimized irrigation
- **Municipal**
  - Automated Metering Infrastructure (AMI) to detect leaks

## PMA No. 5 – Water Quality Optimization

- Published 2023 Groundwater Monitoring Plan
- **Public Outreach to identify new monitoring locations (based on public input)**
- Significantly expanded groundwater monitoring network
- Expanded communication of results – new results available on website twice per year

## PMA No. 4 – Voluntary Fallowing Program

- Performed Biological Restoration of Fallowed Lands Study
- To date, no party has fallowed its land as part of a Permanent Transfer or long-term lease of BPA, but plans exist to do so

# ***Assessment Report Chapter 5: New Information***

## **Chapter Contents**

- Describes new information collected over the reporting period
- For each significant new information item, provides:
  - Description of the new information
  - How the new information was used by Watermaster
  - How it impacts Basin characterization
  - Where to find further details on the new information in the Assessment Report
  - Changes made to the GMP, if any

# Significant New Information

- New information over implementation period (October 2019 – September 2025)

## *Changes to GMP documented in Chpt. 7*

Metered Pumping Data	2023 Groundwater Monitoring Plan	Expanded GWL/GWQ monitoring	New monitoring wells
Recalibrated 2022 BVHM and BVHM Projections	Biological Restoration of Fallowed Lands Study	New external datasets (INSAR, AEM)	GDE Study Report

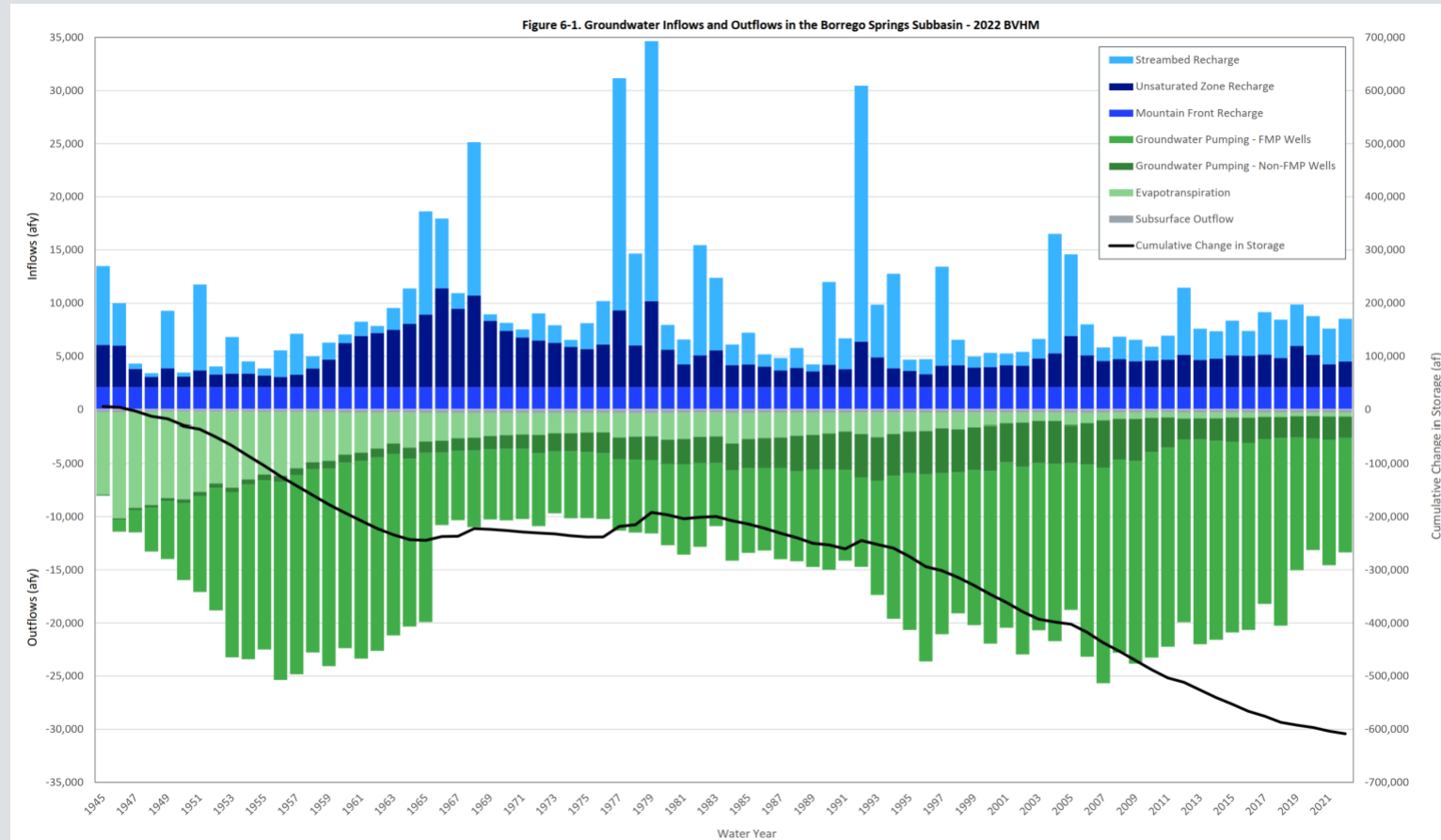
## *Changes to GMP Documented in Chpt. 6*

# Assessment Report Chapter 6: Basin Setting Based on New Information

## Chapter Contents

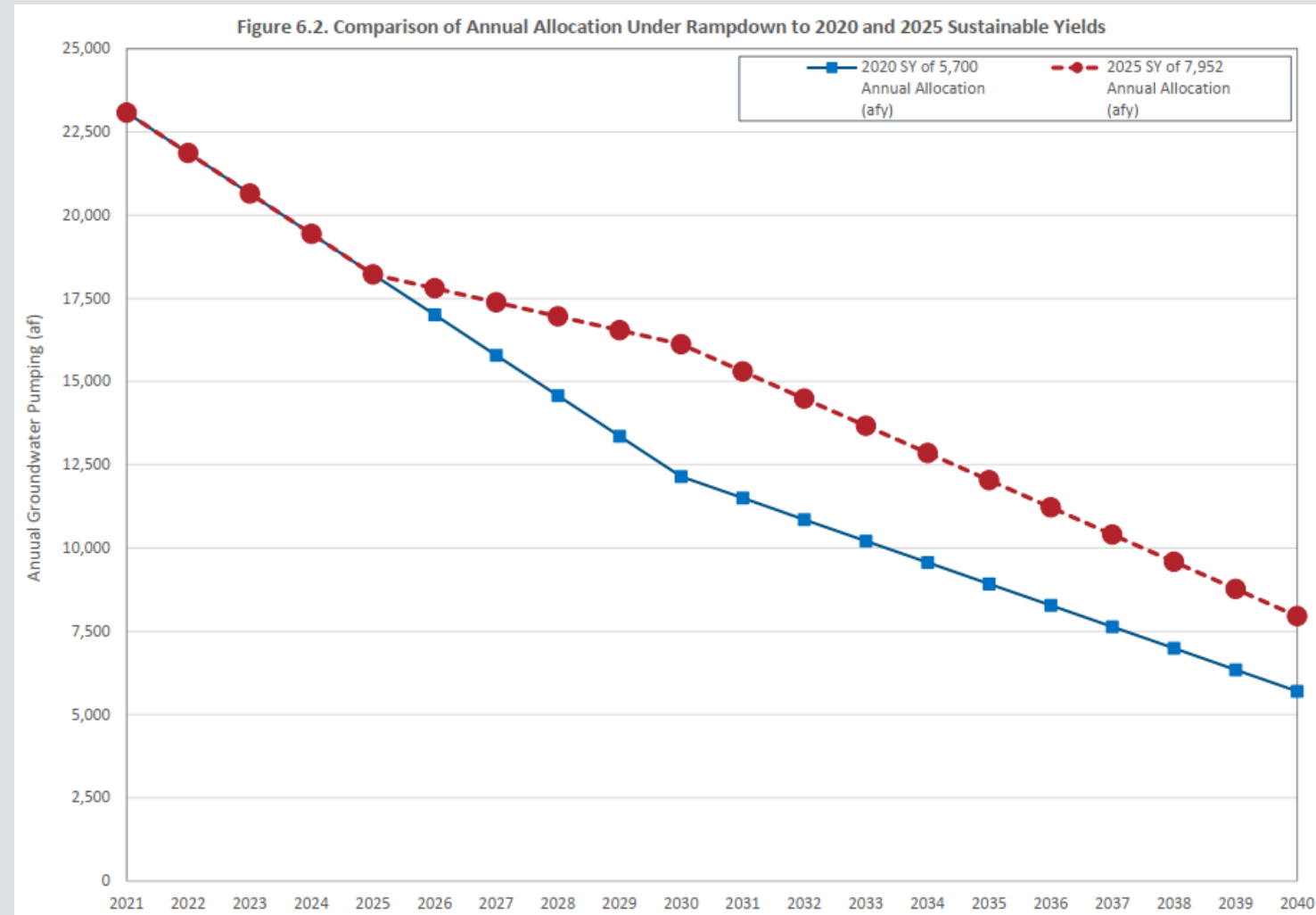
- Describes updates to the GMP's description of the Basin Setting based on new information derived from the 2022 BVHM, including:

- Aquifer properties
- Water Budget
  - Inflows
  - Outflows
  - Change in Storage
  - Sustainable Yield



# 2025 Sustainable Yield and Rampdown Schedule

- 2022 BVHM used to redetermine the Sustainable Yield
  - 2020 Sustainable Yield = 5,700 afy
  - 2025 Sustainable Yield = 7,952 afy
- Rampdown schedule revised in accordance with Judgment
- Pumpers notified of changes to the Sustainable Yield and Rampdown schedule



# *Assessment Report Chapter 7: Groundwater Monitoring Network*

## **Chapter Contents**

- Describes monitoring and data collection efforts over the reporting period
  - Metering program
  - Groundwater level and quality monitoring program (2023 GWMP)
- Status of implementation of the GWMP, including extensive expansion efforts to improve monitoring coverage across the Basin – **funded by SGM Grant**
- Documents the monitoring programs as of fall 2025
- Identifies future activities

# Efforts to Expand Monitoring Program

- Performed public outreach to identify owners willing to participate **based on Public Input at an Open House Events - Thank you!**
- Performed desktop evaluation
- Gathered well construction information
- Canvassed **34** wells to evaluate condition (4 site visits)
- Added **26** new wells to the monitoring network
- Secured and/or rehabilitated **10** wells in monitoring program to make safer and extend monitoring life

# Abandoned Well (converted)

*Before*



*After*



# Abandoned Well (secured)

*Before*



*After*



# Abandoned Well (secured)

*Before*



*After*



## How to Properly Address Abandoned Wells for the Protection of Public Health & Safety

Borrego Springs  
Watermaster

A well is considered abandoned when it has not been pumped or used for supplying water for at least one year. Oftentimes, abandoned wells are left unsecured and open at the wellhead.



Example of an uncovered Abandoned well



Example of an Abandoned well with pump still intact

### Dangers of Abandoned Wells

Abandoned wells can lead to many safety and environmental hazards such as:

- Physical hazards to humans and wildlife at the well head
- Well collapse and sink hole risks
- Debris and contaminants can enter the well at the ground surface and potentially pollute the underlying groundwater basin
- If toxic chemicals reside in an abandoned well, such as oils, such toxic chemicals can also contaminate the groundwater basin
- If the well is constructed across multiple layers of the aquifer system (think of it as a layered cake), the well screens can provide a pathway for cross-contamination between aquifers. An example would be the movement of high nitrate groundwater in a shallow aquifer impacted by septic systems to the deeper, higher quality groundwater.

### Regulations for Abandoned Wells

Abandoned wells in Borrego Springs are regulated by the state of California and San Diego County.

#### State Regulations:

More Information on State of California regulations on wells can be found here: [California Health & Safety Code](#)

#### County Regulations:

More Information on County of San Diego regulations on wells can be found here: [Chapter 4 Well Ordinance.pdf](#)

### Options for Addressing Abandoned Wells

There are three potential options to address abandoned wells for well owners in the Borrego Springs Subbasin:

1. Properly destroy the abandoned well in accordance with County regulations
2. Collaborate with the Watermaster to convert the abandoned well into a monitoring well.
3. If intending to use the well in the future, file an [Inactive Wells - Intent of Use Declaration Form](#) with DEHQ. Fiscal year 2024-2025 fees: \$806 (until June 30, 2025). This will prevent the well from being defined as abandoned.

#### Process to Properly Destroy a Well

Landowners are responsible for the proper destruction of abandoned wells on their property.

- **Inspection:** An inspection by a C-57 licensed driller must first be conducted to assess the well's location, condition, construction, and any potential obstructions.
- **Obtain a Permit:** Obtain a written permit from the San Diego County Department of Environmental Health and Quality (DEHQ). The necessary forms and applications are [here](#). The DEHQ permit will not be issued without a C-57 licensed driller first inspecting and verifying that the well is in good condition.
- **Licensed Contractor:** Once a thorough inspection is conducted, the well destruction must be performed by the C-57 licensed contractor.
- **Filling and Sealing:** Proper well destruction typically involves filling and sealing of the well casing. These requirements may vary based on the well location and condition.

## How to Properly Address Abandoned Wells for the Protection of Public Health & Safety

Borrego Springs  
Watermaster

### Process for Converting to Monitoring Well

The Borrego Springs Watermaster conducts groundwater monitoring of the Borrego Springs Groundwater Subbasin and is actively looking to expand the monitoring network of wells. If an owner of an abandoned well is interested in volunteering the well for Watermaster monitoring (and thereby avoiding the cost to properly destroy the abandoned well), the following is required\*:

**Review Watermaster Information.** The Borrego Springs Watermaster maintains a webpage [here](#) that describes its Groundwater Monitoring Program and opportunities for private well owners to participate in the program.

**Notify Borrego Springs Watermaster.** Inform the Borrego Springs Watermaster of your interest to participate in the monitoring program by completing and returning a [Potential Participant Form](#).

**Provide Well Information.** The following information must be submitted to the Watermaster (if available):

- Well Completion Report and/or Well Driller's Log that describe the well construction information (e.g., depth of well screens)
- Historical water-level and/or water-quality data

**Conduct Site Visit.** The Watermaster will then conduct a site visit to inspect, assess, and document information such as site access, well condition, and current well use.

#### Obtain Permits:

- **Monitoring Well Permit through the County of San Diego DEHQ.** Once Watermaster has determined the well is appropriate for monitoring, a monitoring well permit must be obtained from the DEHQ by the landowner. Permit approval is not guaranteed and will be based on compliance with applicable regulations and site-specific conditions. If the request is not approved and the well has been abandoned, it must be properly destroyed in accordance with all applicable requirements (see destruction process on page 1).
- **Entry Permit from the Borrego Springs Watermaster.** The Entry Permit is intended to protect the well owner from liability for damage and injury resulting from Watermaster's entry onto the parcel for the purposes of monitoring. At the request of the well owner, a Data Confidentiality Agreement may also be included.

\*The Well Owner will be responsible for all costs to convert the monitoring well.

### Additional Resources on Abandoned Wells

- Further details on San Diego County's Requirements for Wells can be found here: [https://www.sandiegocounty.gov/content/dam/sdc/deh/lwqd/Chapter\\_4\\_Well\\_Ordinance.pdf](https://www.sandiegocounty.gov/content/dam/sdc/deh/lwqd/Chapter_4_Well_Ordinance.pdf)
- Information on the San Diego County's DEHQ Monitoring Well Program Permits: [https://www.sandiegocounty.gov/content/sdc/deh/lwqd/sam\\_monitoring\\_well\\_page.html#ProgramInformation](https://www.sandiegocounty.gov/content/sdc/deh/lwqd/sam_monitoring_well_page.html#ProgramInformation)
- Further details on the destruction of water wells can be found in the California State Department of Water Resources Bulletin No. 74-90:
  - <https://water.ca.gov/Programs/Groundwater-Management/Wells/Well-Standards/Combined-Well-Standards/Bulletin-74-90-Intro>
  - <https://water.ca.gov/Programs/Groundwater-Management/Wells/Well-Standards/Combined-Well-Standards/Water-Destruction>
  - <https://water.ca.gov/Programs/Groundwater-Management/Wells/Well-Standards/Combined-Well-Standards/Monitoring-Destruction>



Want to learn more?  
Scan me to visit the Borrego Springs Watermaster Website



Scan to view the Participant form

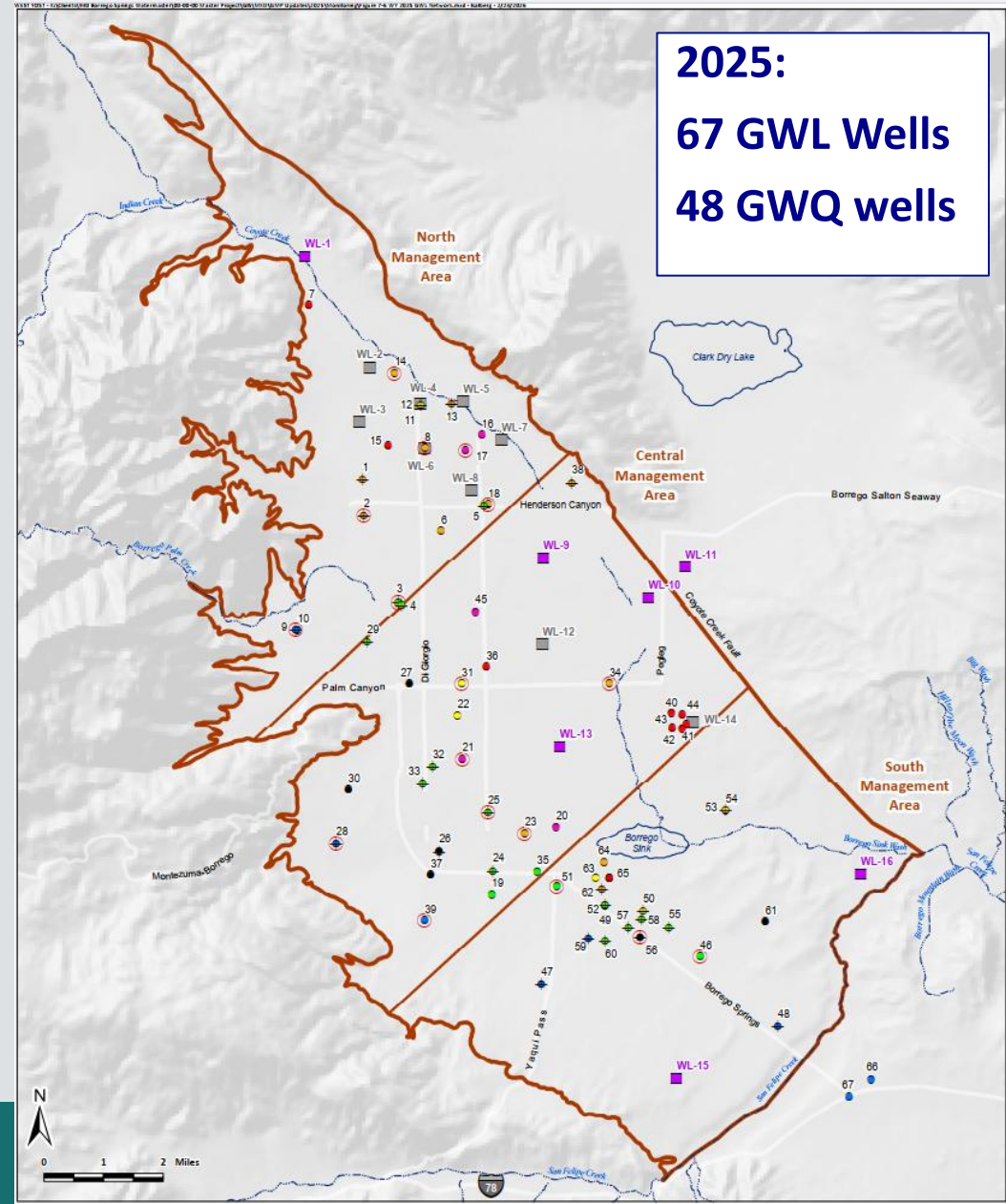
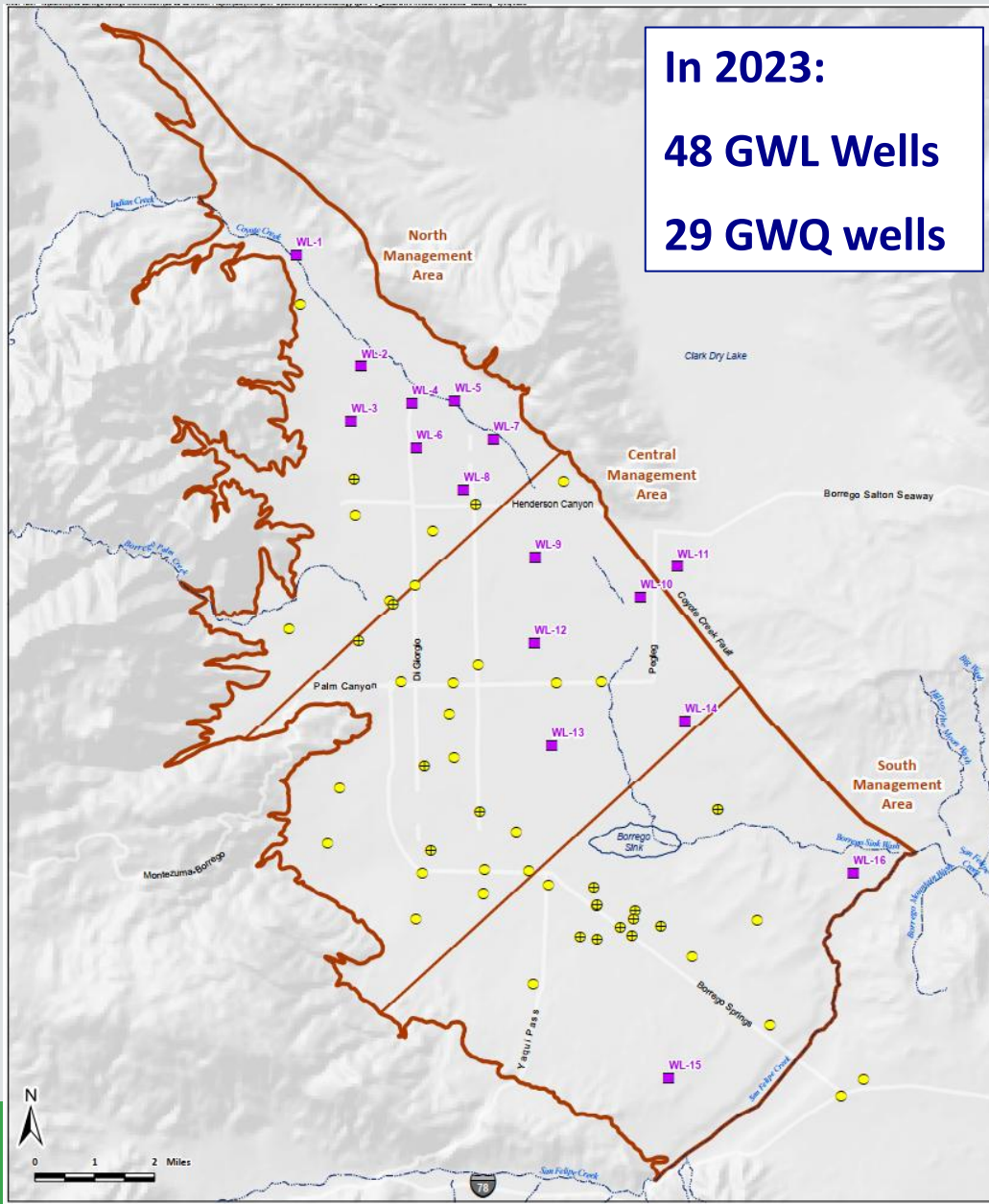


Scan to view water.ca.gov



Informational flyer on proper well abandonment is available on the Watermaster & County websites

# Thanks to Public Support – Major Expansion of Monitoring Program!



# ***Assessment Report Chapter 8: Assessment of Progress Towards Sustainability***

## **Chapter Contents**

- Assesses progress towards achieving sustainability based on historical, current and projected future Basin conditions
- Defines methods used to assess progress:
  - Monitoring data (historical and new)
  - Groundwater modeling (BVHM)
- Compares current and future conditions to the SMC for each sustainability indicator applicable to the Basin

# ***Assessment Report Chapter 8:*** **Assessment of Progress toward Sustainability**

Analysis of historical, current, and potential future\* conditions:

Climate\*

Pumping\*

Land Use\*

Groundwater  
Levels\*

Groundwater  
Storage\*

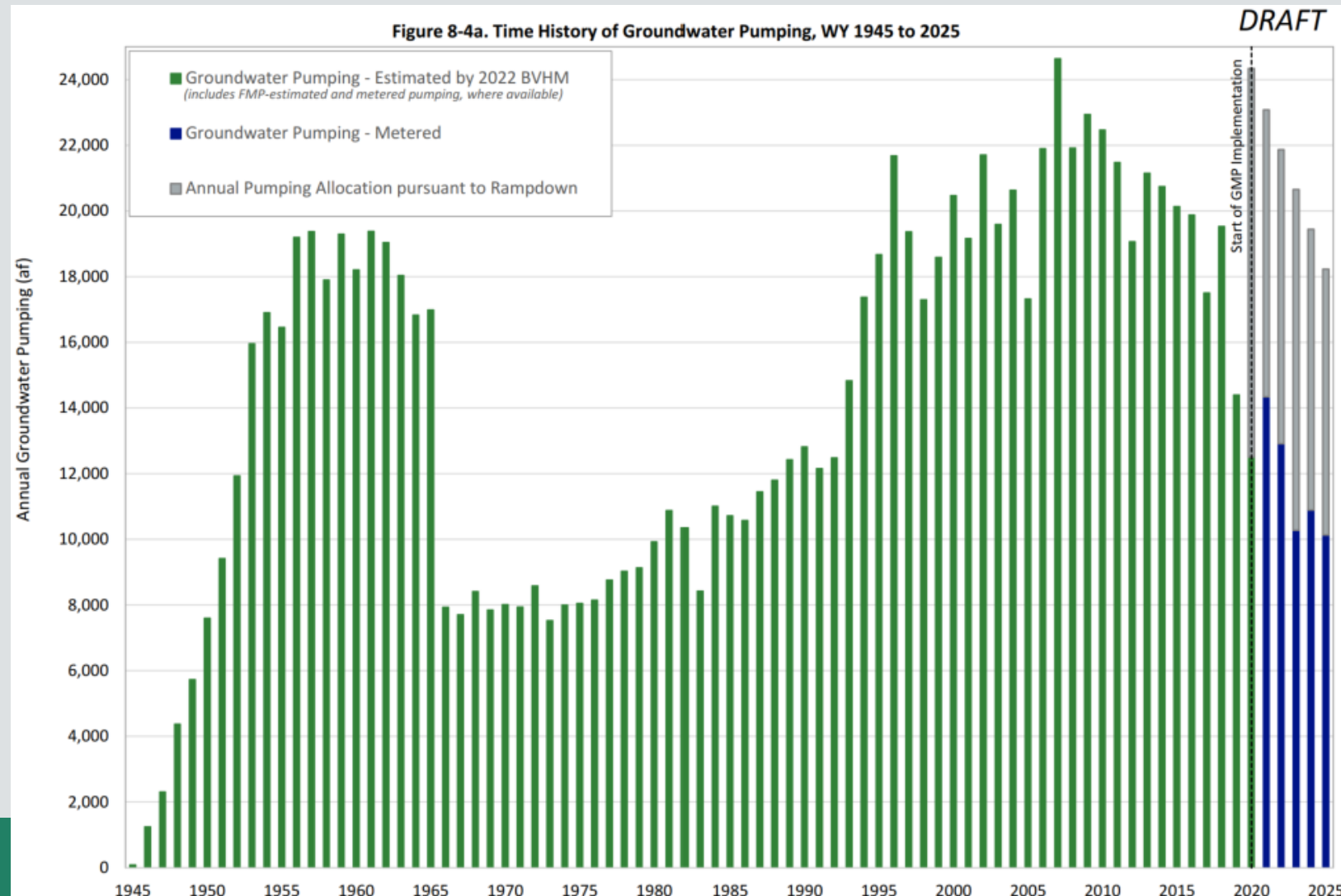
Land  
Subsidence

Groundwater  
Quality

# Analysis of Progress Towards Sustainability

## *Historical & Current Pumping*

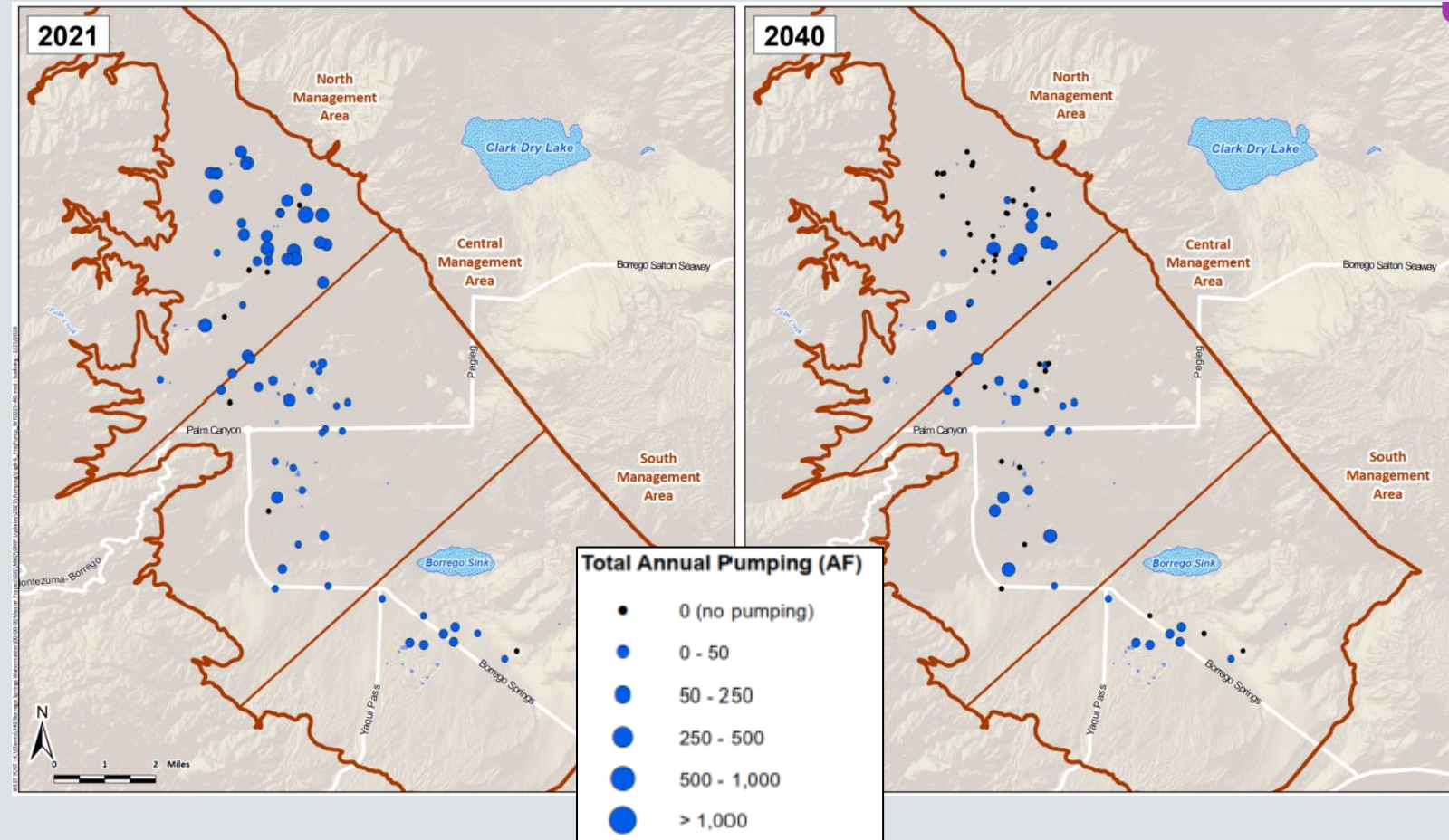
- **Pumping has declined 29% from WY 2021 to 2025**
  - Majority of pumping (~77%) occurs in North Management Area (NMA)
  - Nearly all pumping reductions occurred in NMA
- Reductions in pumping are significantly ahead of the required Rampdown schedule.
  - In WY 2025, **pumping was 45% less** than the Annual Allocation



# Analysis of Progress Towards Sustainability

## *Projected Pumping*

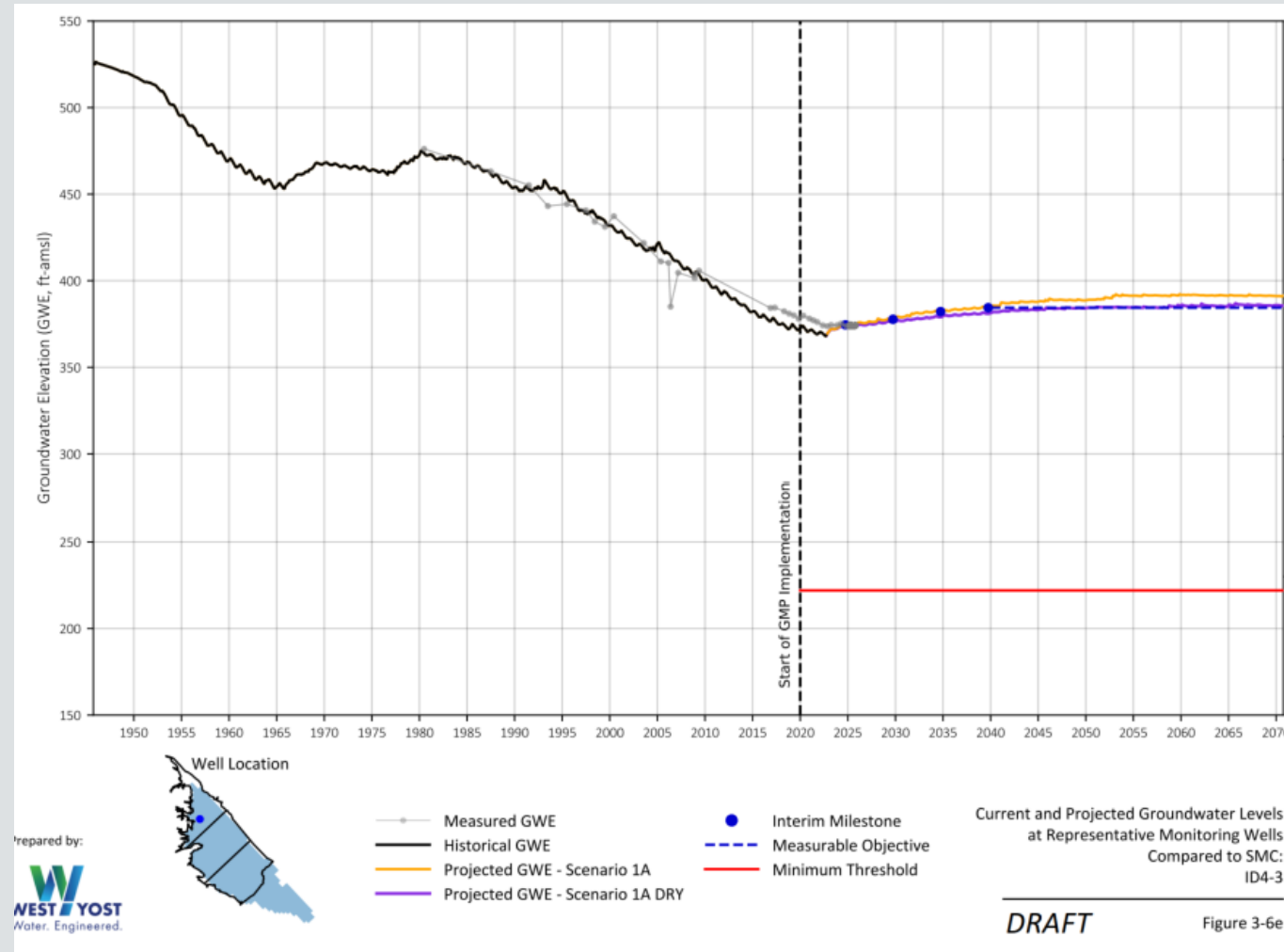
- Most Pumpers plan to exercise water rights and reduce pumping
  - Only 2 Parties plan to increase pumping to meet demands
- Projected pumping is below the Annual Allocation through WY 2040 and below the 2025 Sustainable Yield through WY 2070 \*\*\*
- Changes in future pumping differ by MA:
  - Decrease in NMA and SMA
  - Increase in CMA



# Analysis of Progress Towards Sustainability

## *Historical & Current Groundwater Levels*

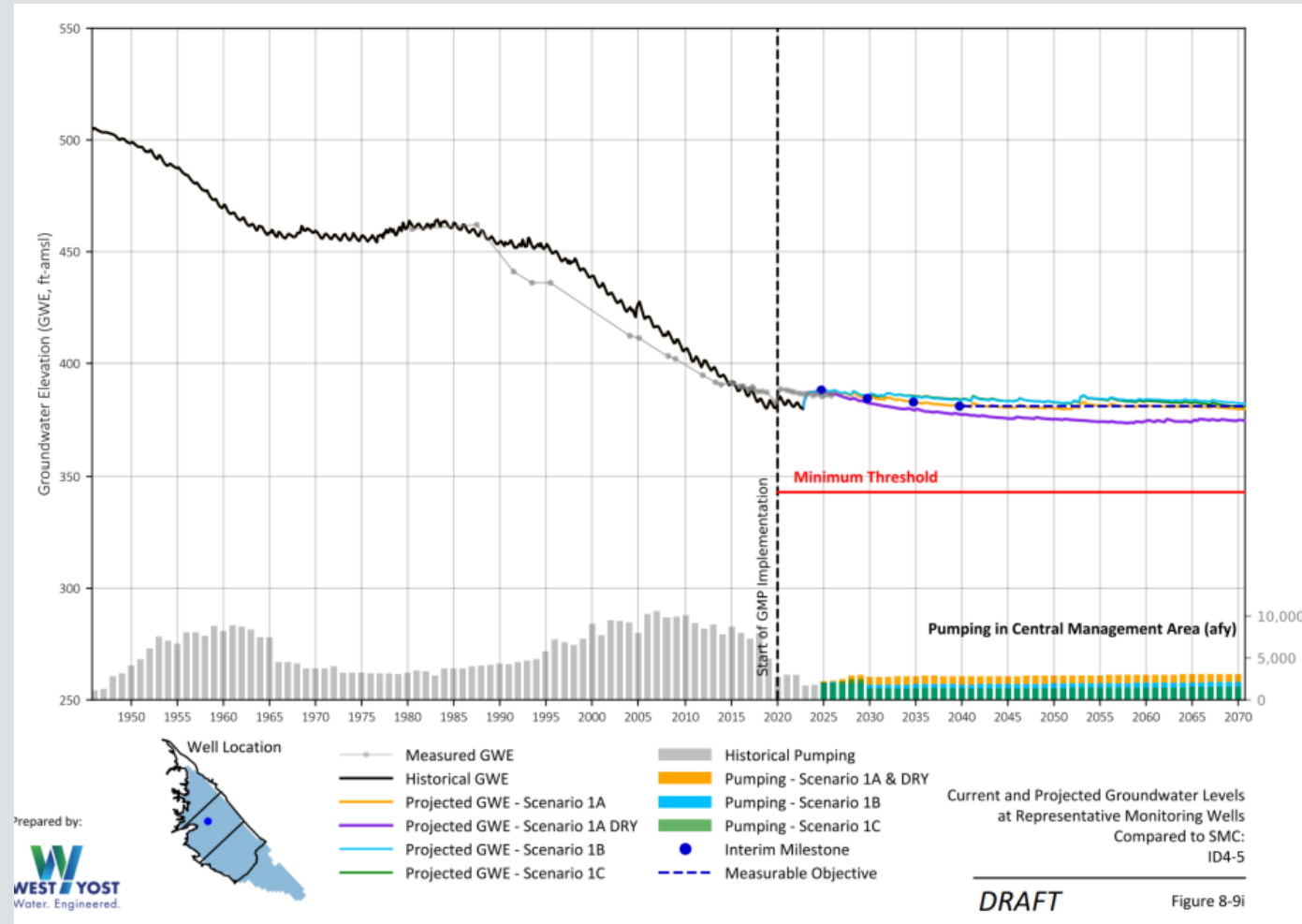
- In all areas of the Basin, **groundwater levels are declining at lesser rates than in the past, and in some cases approaching stabilization**
- As of WY 2025, all water levels are above minimum thresholds for representative monitoring wells
- Appendix B contains hydrographs of the 67 wells in the monitoring network



# Analysis of Progress Towards Sustainability

## Projected Groundwater Levels

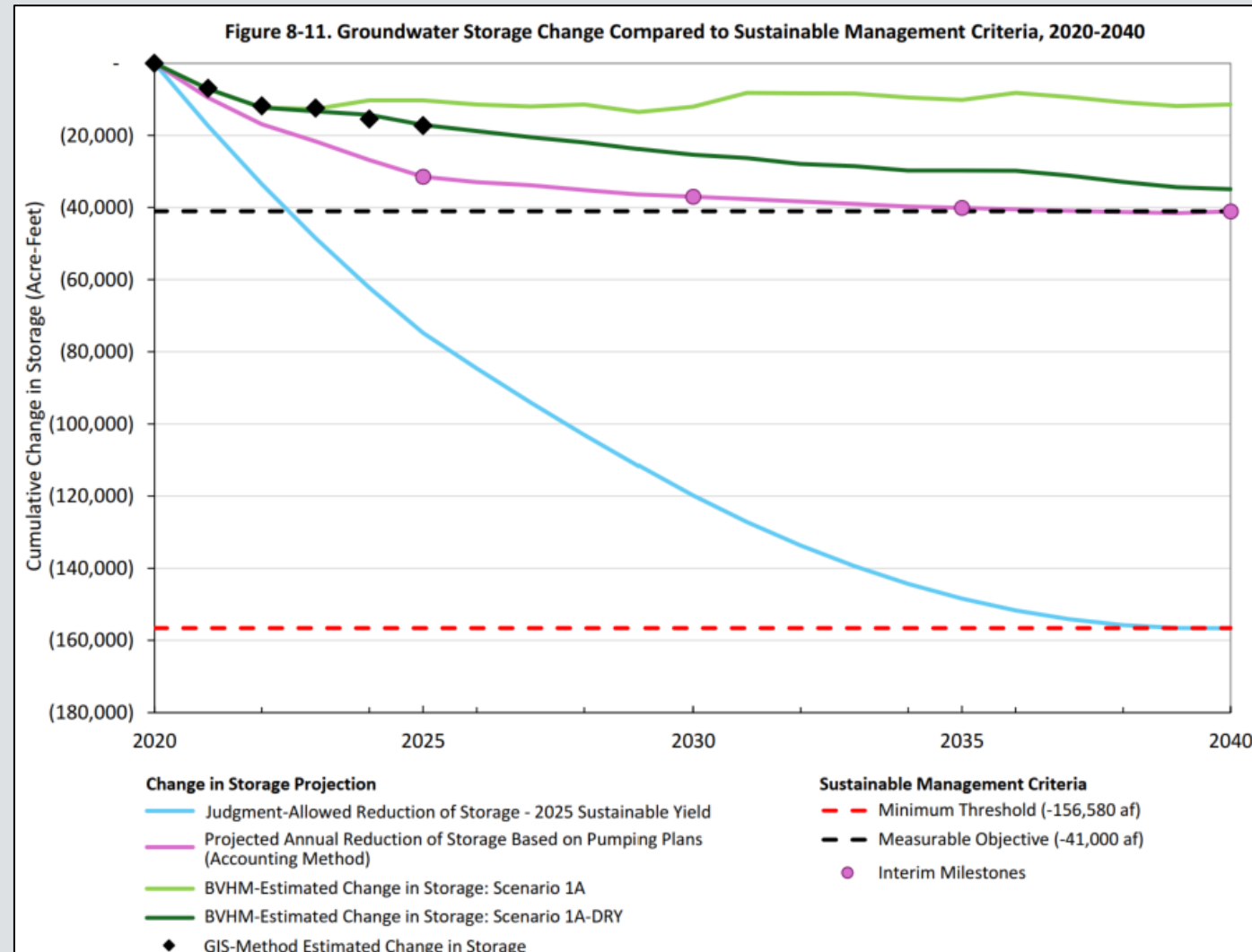
- BVHM used to evaluate future:
  - Trends in groundwater-levels
  - Impact of adaptive management strategies on groundwater-levels
- Results show:
  - No Minimum Thresholds are exceeded through 2070
  - Localized decline in WLs may occur (in parts of CMA/SMA), which the Watermaster will continue to analyze
- Overall, the analysis of historical, current, and future groundwater levels demonstrates that **the Basin in on track to achieve sustainability!**



# Analysis of Progress Towards Sustainability

## *Historical & Current Storage Conditions*

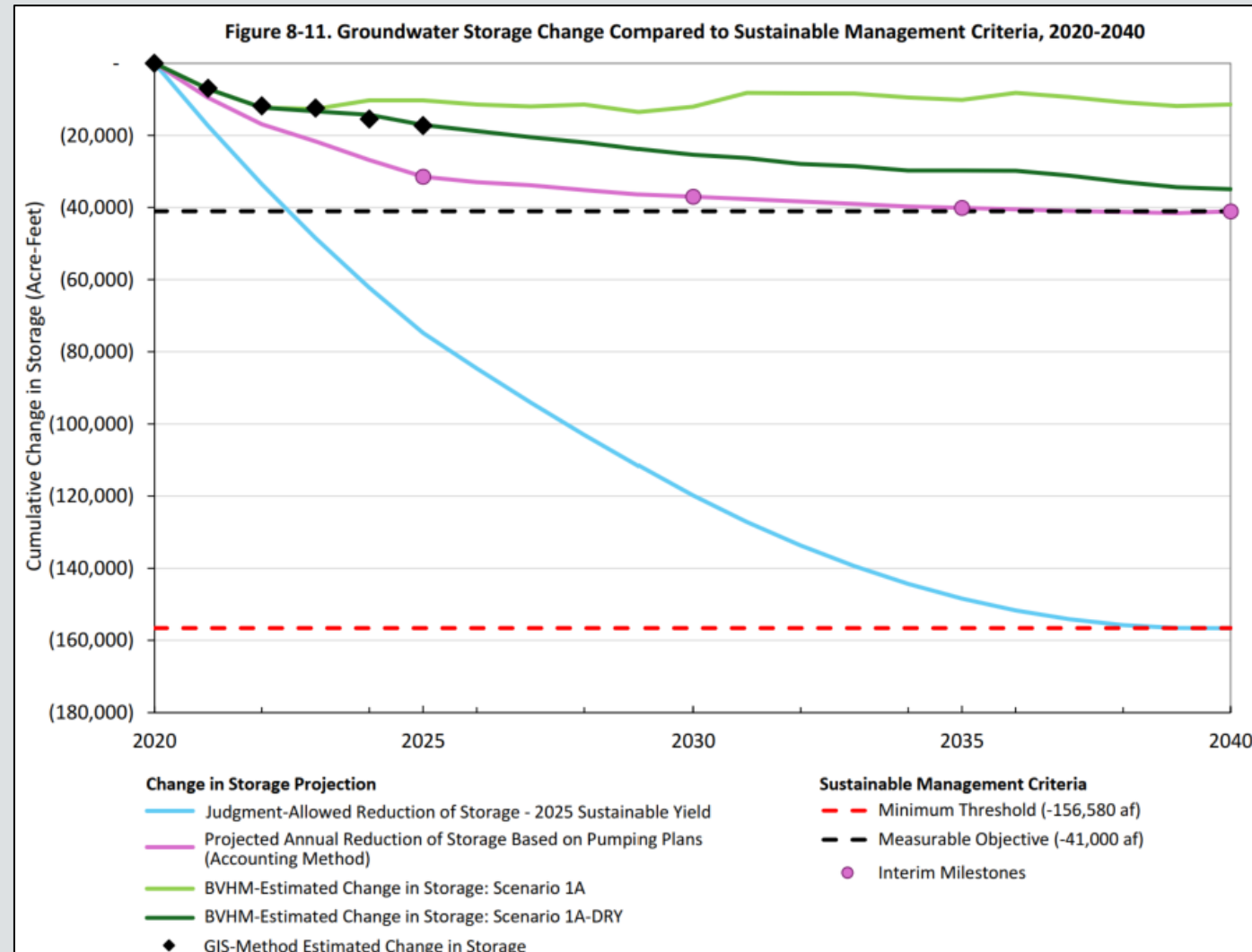
- The rate of groundwater storage decline is slowing
  - -7,000 afy pre-Judgment
  - -3,500 afy post-Judgment
- Measured storage change through WY 2025 was less than the 2025 Interim Milestone
  - This means improvements are happening faster than assumed



# Analysis of Progress Towards Sustainability

## *Projected Storage Conditions*

- BVHM projection of storage reductions will remain significantly above the minimum threshold
- Rate of decline is projected to decrease and stabilize by 2040
- Basin is on track to meet the Sustainability Goal



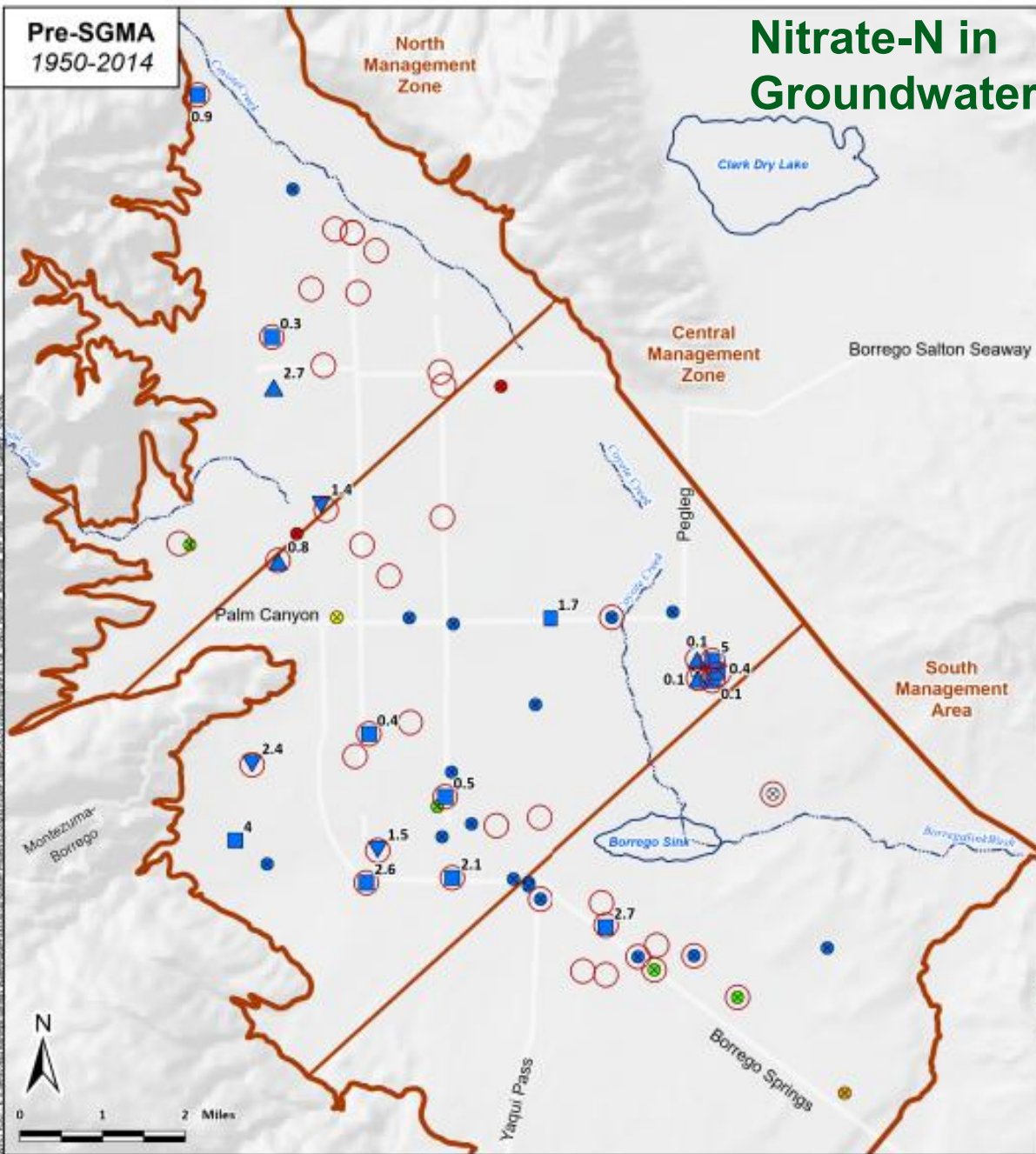
# Analysis of Progress Towards Sustainability

## *Historical & Current Groundwater Quality*

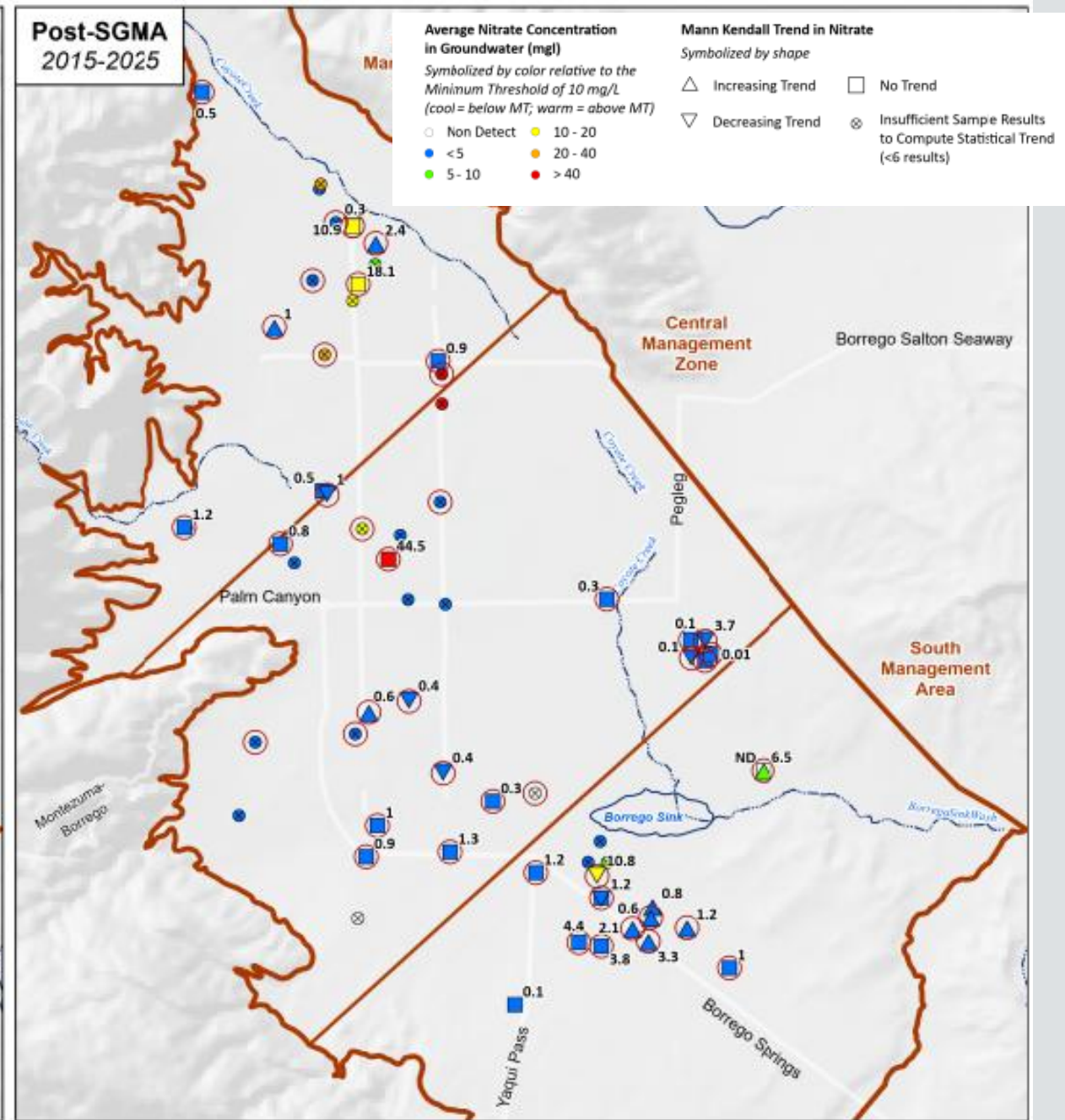
- Discussion of historical conditions, including known constituents that already had concentrations exceeding standards prior to the adoption of SGMA
- Expanded groundwater monitoring network has greatly improved the understanding of Basin-wide water-quality conditions
- Analysis for each Constituent of Concern in pre- and post-SGMA period
  - Time history charts of concentrations
  - Statistical Trend analysis – are concentrations increasing, decreasing, or no trend?
  - Snapshot as of fall 2025, the end of the 5-Year reporting period
- This analysis to be used by the TAC to identify any trends that indicate a potential future threat to beneficial uses

# Nitrate-N in Groundwater

Pre-SGMA  
1950-2014



Post-SGMA  
2015-2025



**Table 8-9a. COC Summary Statistics North Management Area - Nitrate**

<b>Statistic</b>	<b>Pre-SGMA Trends</b>	<b>Post-SGMA Trends</b>
Number of Wells with Data	7	19
Number of Sample Results	89	162
Number of Wells with Results above MCL	2	6
% Wells with a Result above MCL	29	32
Number of Results above MCL	3	22
% Results above MCL	3	14
% of wells with MK Increasing Trend	14	11
% of wells with MK No Trend	29	37
% of wells with MK Decreasing Trend	14	5
% of wells with insufficient data for Trend Analysis	43	47

# Assessment Report Chapters 3 & 8: Analysis of Groundwater Quality

## Nitrate- N in NMA Pre-SGMA

- Data are available throughout the NMA, but only four wells had sufficient data to compute statistical trends for the period of analysis
- Average N concentrations at all wells with data were less than the MT of 10 mg/L
- For wells with sufficient data to compute trends, average concentrations ranged from 0.3 to 2.7 mg/L
- Two wells had no trend, one had an increasing trend, and one had a decreasing trend
- This does not reflect USGS data that reported much higher N concentrations

## Nitrate- N in NMA Post-SGMA

- More data available in the post-SGMA - 19 wells vs. 4 wells
- Average N concentrations were less than the MT at all but six wells
- For the wells with sufficient data to compute trends, average N ranged from 0.3 to 18.1 mg/L
- Majority of wells showed no trend. One had a decreasing trend, and two increasing trends (but are not > MT)
- Wells with the highest N are screened in upper and middle aquifer, and are consistent with historical ranges reported by the USGS
- Fall 2025 nitrate concentrations ranged from 0.61 to 90 mg/L

# Assessment of Progress toward Sustainability Groundwater Quality

---

The expansion of Watermaster groundwater monitoring network has greatly improved the understanding of Basin-wide water-quality conditions for the five COCs TDS, nitrate, sulfate, arsenic, and fluoride.

---

Overall, the data show that groundwater in the shallow aquifer system remains high in TDS, nitrate, and sulfate (as was observed in the pre-SGMA period), but that the concentrations are stable (no trend) at most wells across the Basin in the post-SGMA period.

---

In the SMA, some wells screened in the deep aquifer system show increasing arsenic trends in the post-SGMA period, though there is limited data in the pre-SGMA period to compare it to.

---

The pre- and post-SGMA data for fluoride demonstrate that concentrations are not of concern are less than half of the MCL of across the entire Basin, with only one well exceeding the MCL in the post-SGMA period.

---

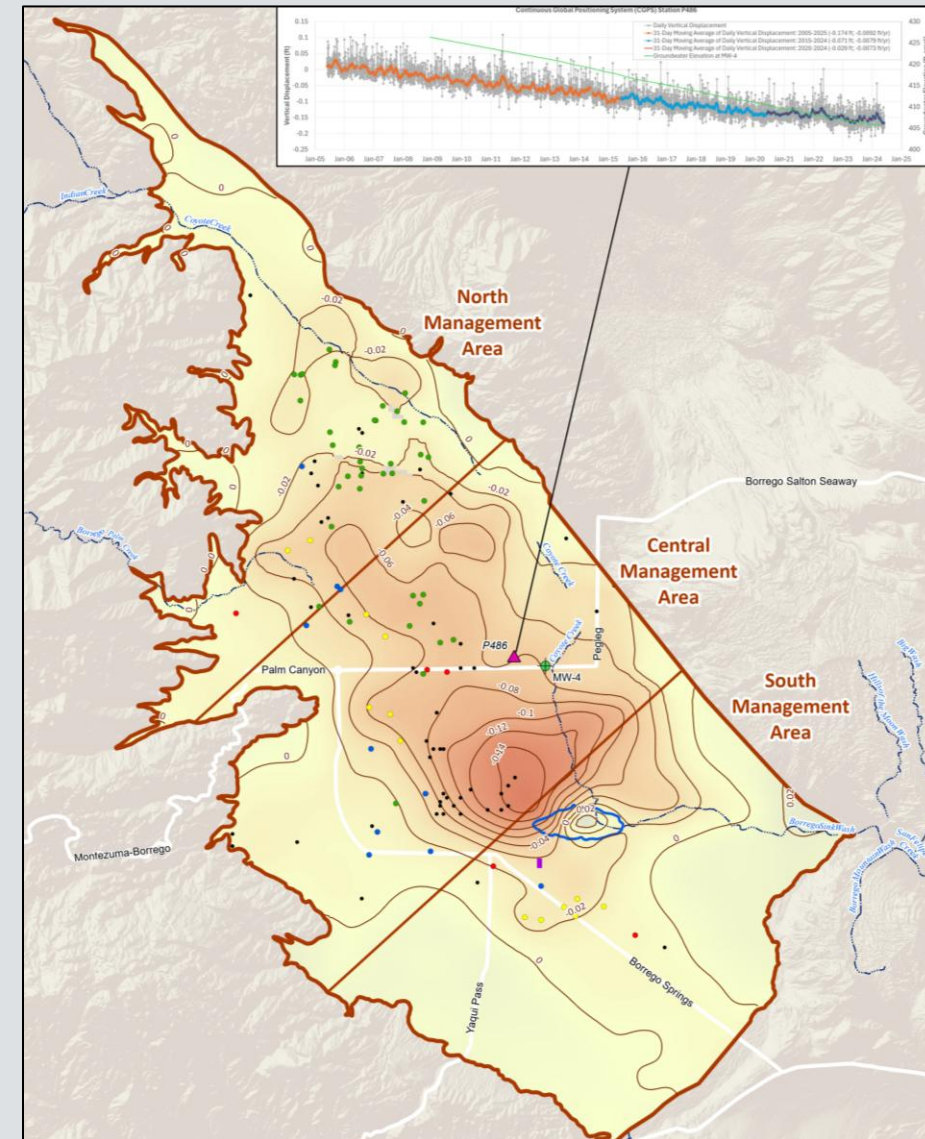
Based on the most recent sampling event in fall 2025, there are no municipal supply wells with concentrations that exceed a primary MCL (nitrate, arsenic), and only three municipal wells that exceed a secondary MCL. The only wells in the Basin that exceed primary MCLs are non-potable wells or observation wells.

# Analysis of Progress Towards Sustainability

## *Land Subsidence*

Updated and mapped recent subsidence data and concluded that:

- Subsidence is minimal, slowing, and not expected to adversely impact overlying infrastructure as groundwater levels stabilize during the Rampdown thru 2040
- Watermaster will monitor and evaluate land subsidence every five years for GMP Assessment Reports, in accordance with response to RCA No. 6



# Assessment of Progress toward Sustainability

- The Basin in **ON TRACK TO ACHIEVE SUSTAINABILITY BY 2040**, and BEYOND!
- Continued monitoring of groundwater elevations and periodic recalibration of the BVHM will be used to continue to track progress towards reaching the sustainability goal by WY 2040 and will be reported in Annual Reports and future 5-year Assessment Reports.

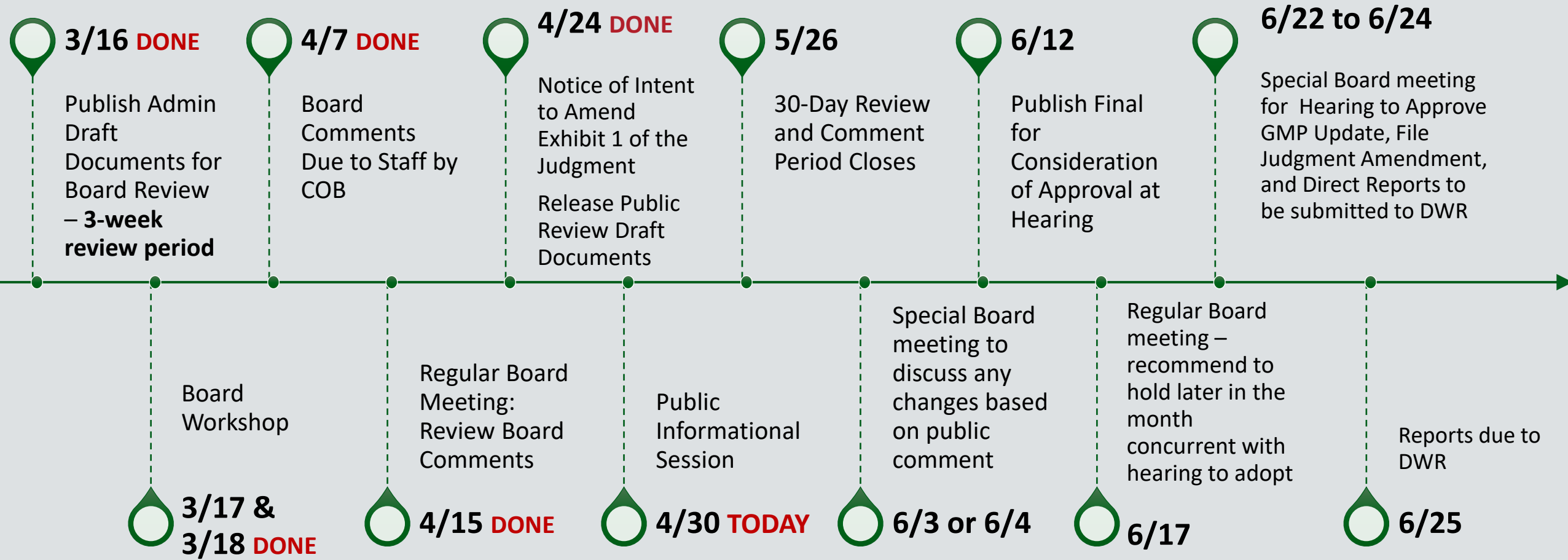
**Questions?**

# Give us your Feedback!

- Public comments will be accepted through 5pm on May 26, 2026
- Email comments to: [borregospringswm@westyost.com](mailto:borregospringswm@westyost.com)

**NOTE: Feedback must be submitted in writing to be considered for inclusion in Draft Final Report. If you need assistance providing feedback, please contact us.**

# Schedule to Complete Assessment Report and 2026 GMP Update



**Thank you for your  
participation!**